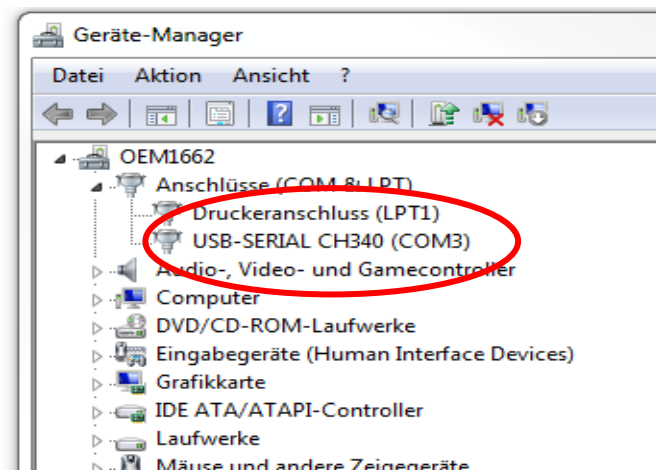


IMPORTANT!

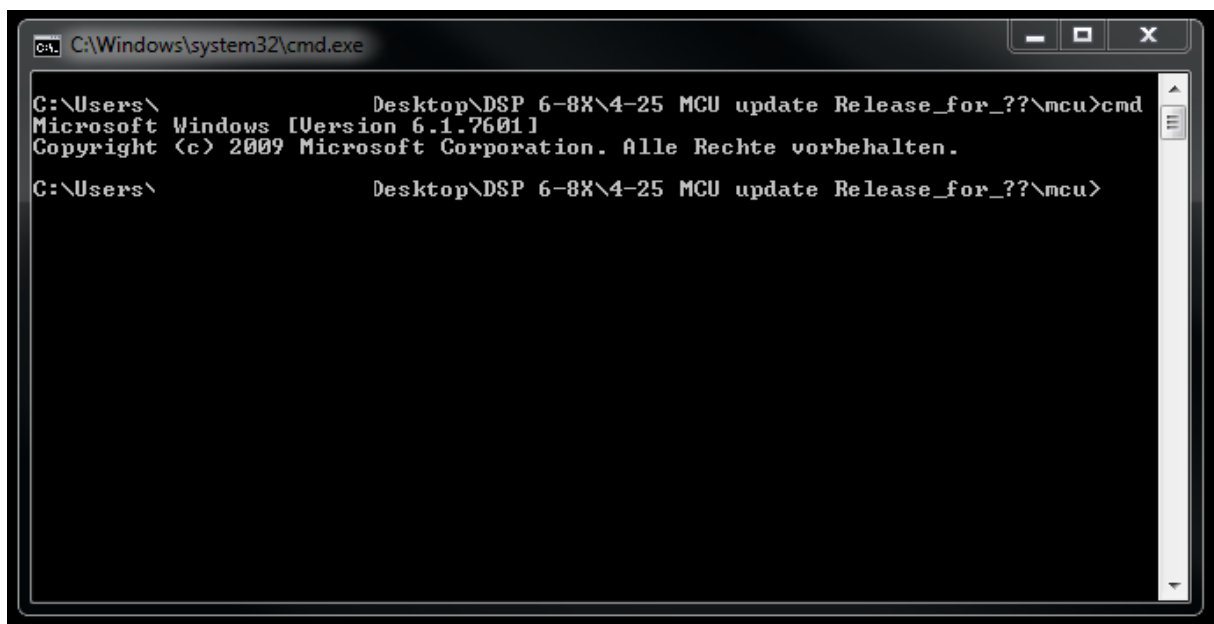
The GUI software must be closed before starting the MCU update!

MCU update instruction

1. Connect the DSP 6-8X to a power source (+/- 12 Volt and remote wire)
2. Connect the DSP 6-8X to your Windows PC with the included USB-cable
3. Check the COM port of the unit (USB-SERIAL CH340) with the device manager, e.g. COM port "3"

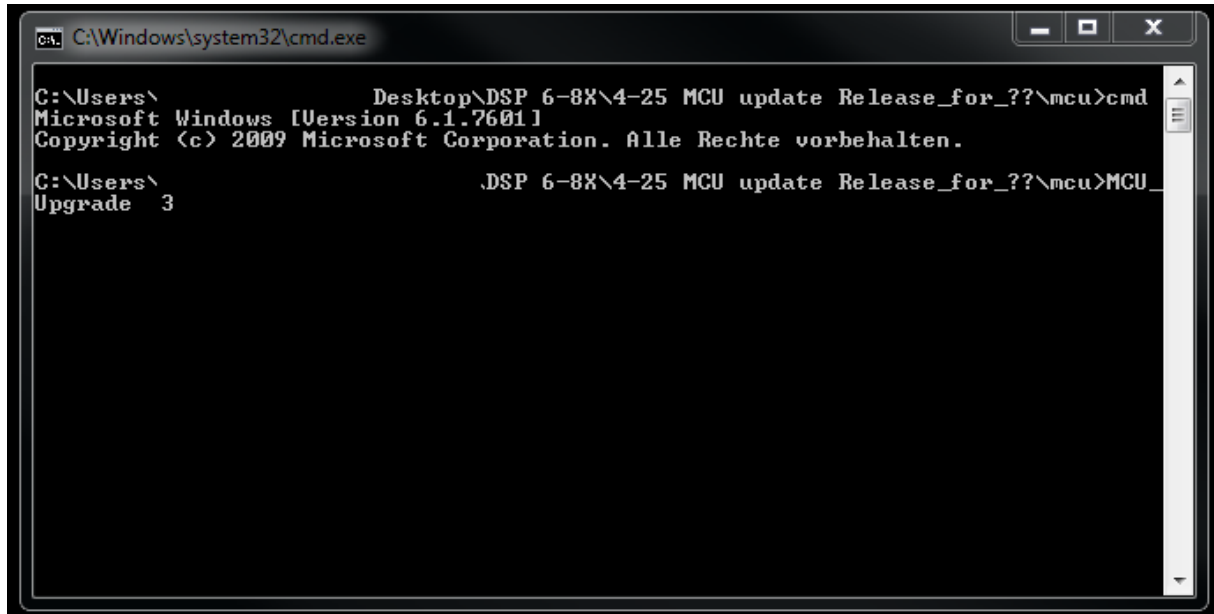


4. Start the update by operating "MYCMD" (from MCU update file).The command window will open



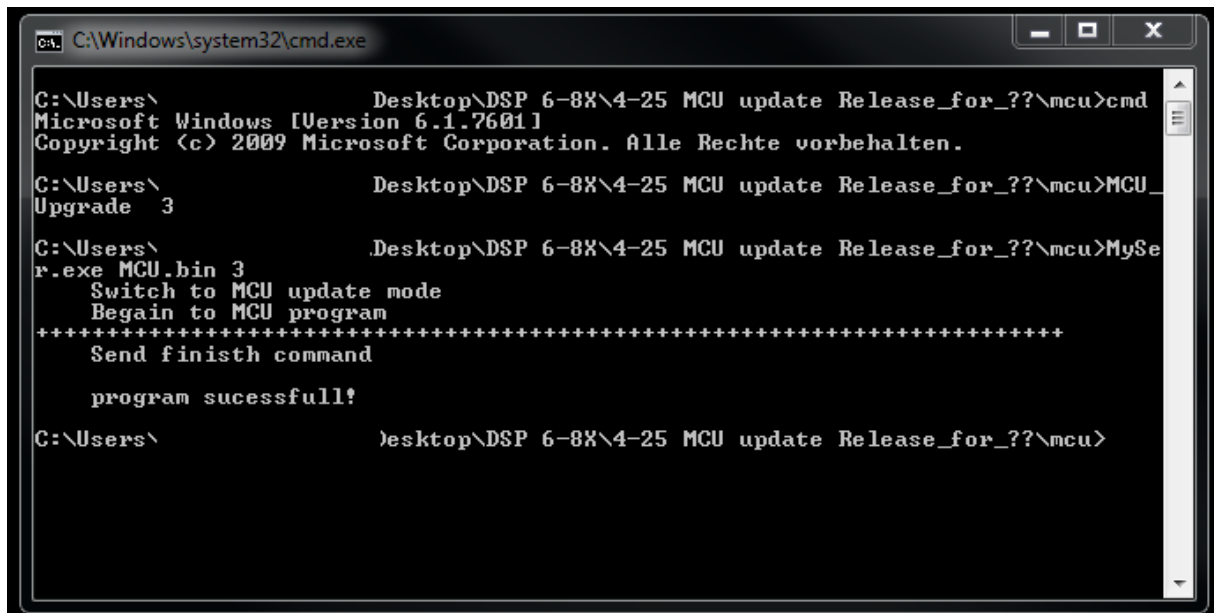
5. Enter the following command: **MCU_Upgrade x** (x is your COM port, e.g. MCU_Upgrade)

Attention: Enter two (2!) space tabs between the command and the COM port number!



```
C:\Windows\system32\cmd.exe
C:\Users\Desktop\DSP 6-8X\4-25 MCU update Release_for_??\mcu>cmd
Microsoft Windows [Version 6.1.7601]
Copyright (c) 2009 Microsoft Corporation. Alle Rechte vorbehalten.
C:\Users\Desktop\DSP 6-8X\4-25 MCU update Release_for_??\mcu>MCU_
Upgrade 3
```

6. Confirm the command with the "ENTER" button.



```
C:\Windows\system32\cmd.exe
C:\Users\Desktop\DSP 6-8X\4-25 MCU update Release_for_??\mcu>cmd
Microsoft Windows [Version 6.1.7601]
Copyright (c) 2009 Microsoft Corporation. Alle Rechte vorbehalten.
C:\Users\Desktop\DSP 6-8X\4-25 MCU update Release_for_??\mcu>MCU_
Upgrade 3
C:\Users\Desktop\DSP 6-8X\4-25 MCU update Release_for_??\mcu>MySe
r.exe MCU.bin 3
Switch to MCU update mode
Begin to MCU program
*****
Send finisth command
program sucessfull!
C:\Users\Desktop\DSP 6-8X\4-25 MCU update Release_for_??\mcu>
```

The unit will be updated now. Close the window after the program has been finished successfully.